



Campus Identity Provider

Supporting easy integration with Identity Federations

Campus IdP extends the Federation-as-a-Service concept to the campus. Makes building a Campus IdP quick and easy. Eases the learning curve for admins

GÉANT Campus IdP features:

- Providing all required Shibboleth IdP configuration features
- Allowing multiple deployment options
- Managing different server environments (test, dev, prod)
- Providing DB and LDAP restore functionality
- Displaying basic access statistics

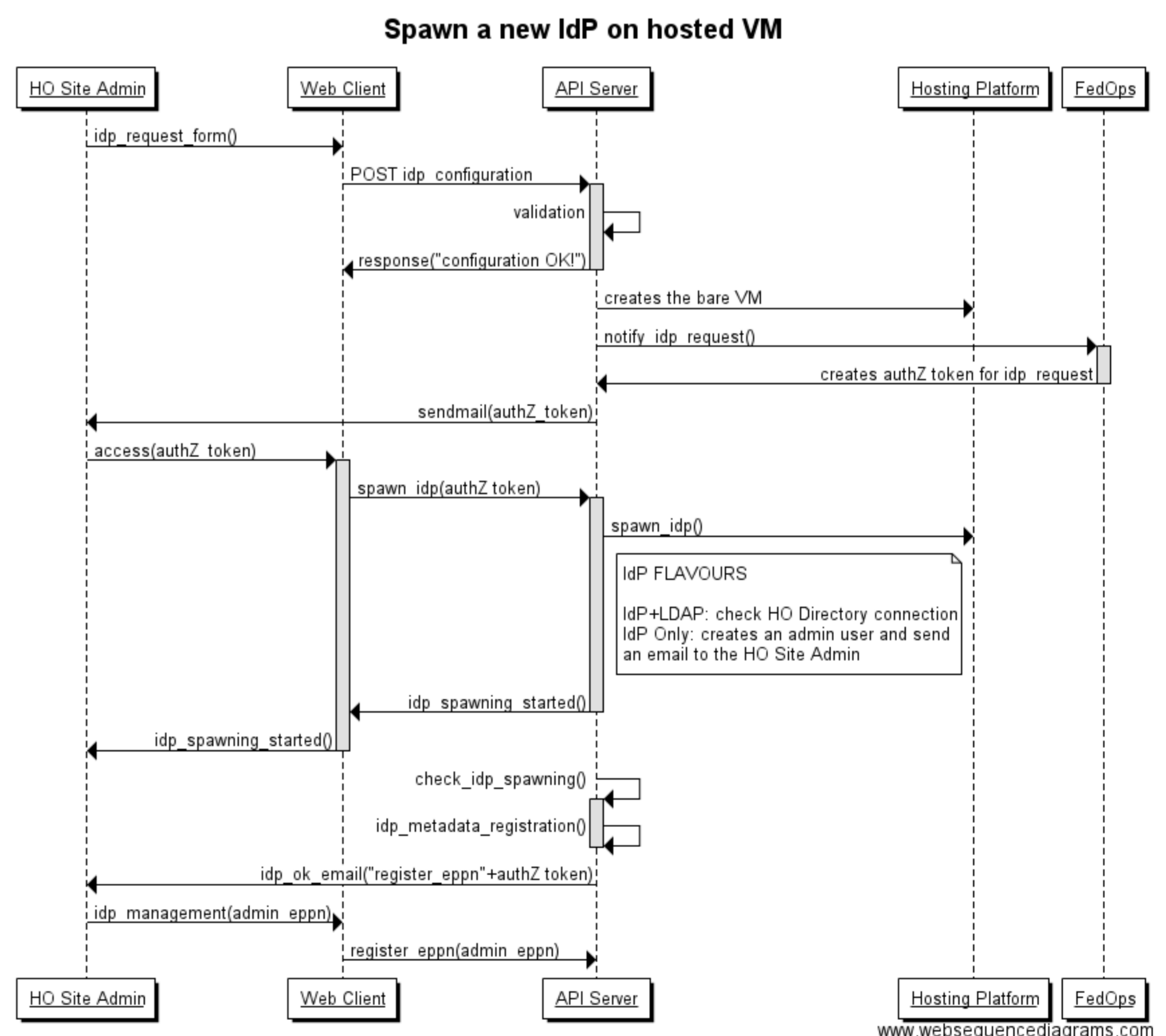
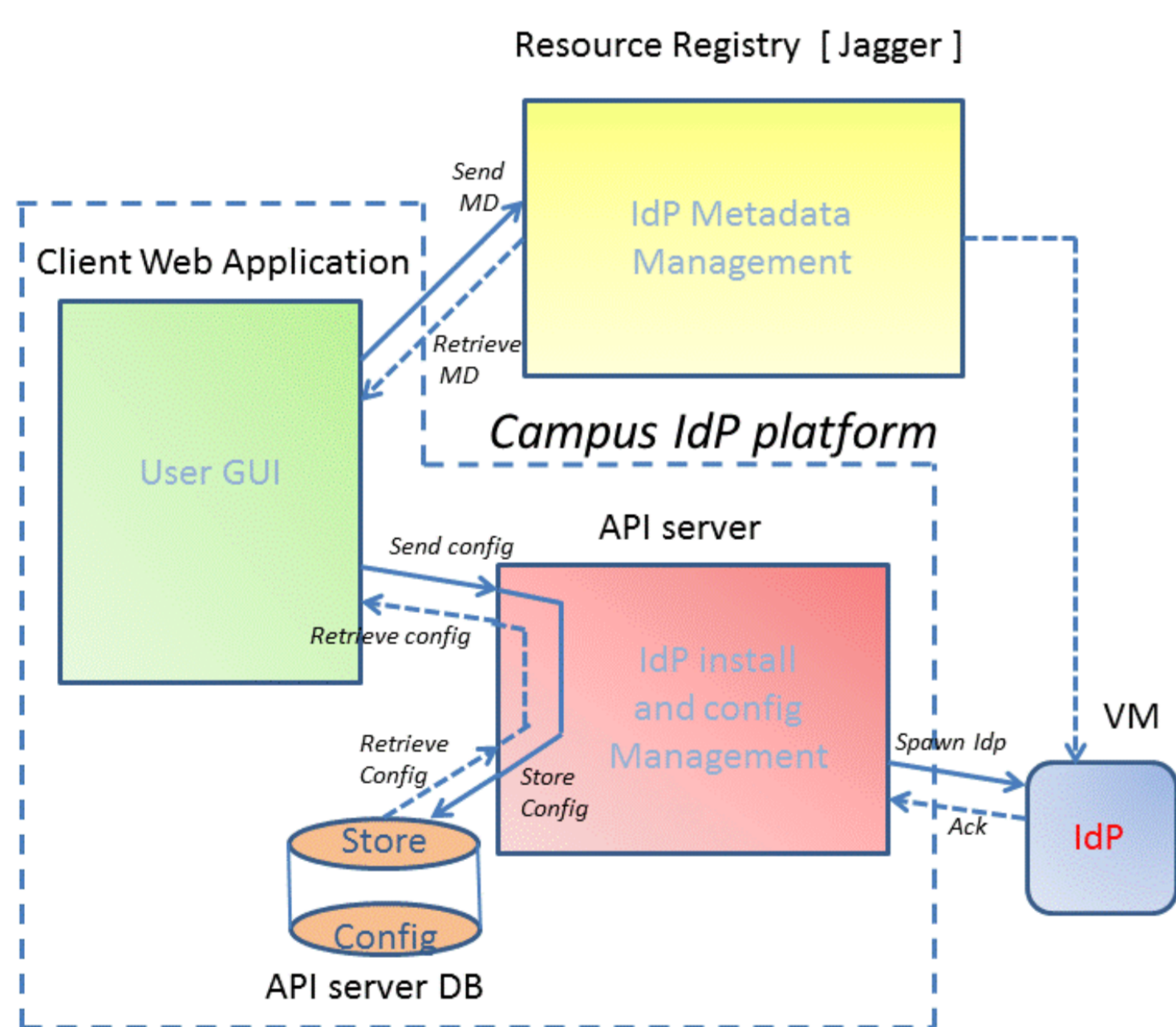
Currently provided solution:

Comprehensive **ANSIBLE** playbook suite to deploy a Campus IdP

<https://github.com/GEANT/ansible-shibboleth>



Roadmap: A GÉANT Campus IdP platform



Stay tuned ! 😊

On going developments:

- Integration with OpenStack
- Generic configuration API development
- Integration with Jagger
- Docker-based deployment



Campus IdP Team:

Anass Chabli (RENATER), Marco Malavolti, Mario Reale, Davide Vagheti (GARR), Marko Eremija (AMRES), Jan Oppolzer (CESNET), Valentin Pocotilenco (RENAM), Janusz Ulanowski (HEAnet), Karl Meyer, Dick Visser (GEANT)

